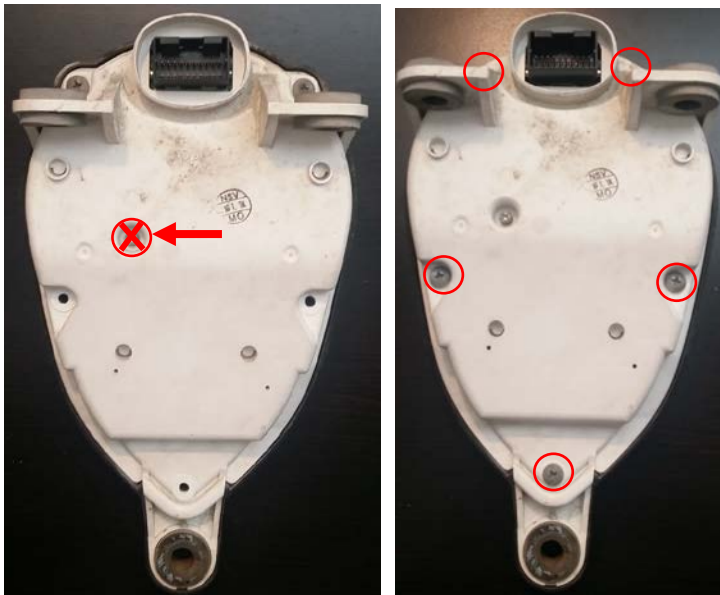




Speedometer Faceplate Replacement

Kawasaki Vulcan 900 and 1500

1. Remove the Gauge from the bike.
2. Find a suitable work surface and place a towel down to prevent scratching the glass.
3. Turn the gauge face down and remove the 5 screws. All visible screws will be removed except for the center screw.



4. Once the screws are removed the front cover can be lifted and rotated out of the way.



5. With the front cover rotated out of the way you can access the faceplate. Before removing the needles, lightly lift the speedo needle and turn it back over the needle stop, marking where it lands (you can also take a picture). Make note of where the gas gauge is as well. This will be used when re-installing the needles later. Use a fork or other suitable two pronged tool to get under the needles and gently pry them up as shown.



6. With the needles removed, remove the 4 screws in the faceplate and remove it from the gauge. The clear base will also be loose. You will need to remove the faceplate from the clear base.



7. Once the faceplate is removed turn it over and use a pair of tweezers or needle nose pliers to remove the needle stop pin. Place the stop pin in the new faceplate in the same location as it was on the original.



was on the original.

- Place the new gauge face on the clear base and place everything back in the gauge assembly, securing it with the 4 screws removed in step 6.



- Replace the needles according to where they were at when they were removed. This step is easier if the gauge is hooked up to the bike. This allows the needle motor for the speedometer to reset to zero, and the gas gauge to set where it was according to fuel levels. (hint: this is also easier if the bike is on a full tank, as the fuel level is known and easy to set). If you do not hook it to the bike, place the needles back where they were at when removed as noted in step 5.



10. Turn the front cover back and put it in place. Replace the 5 screws in the back of the gauge. Reinstall it in the bike and test ride for proper needle calibration. Repeat step 9 if needle calibration is off.



11. Ride on and enjoy!

Thanks for your purchase. If you have questions you can email me at jared@speedgaugecustoms.com.

Thanks

Jared Angell

Speed Gauge Customs

www.speedgaugecustoms.com